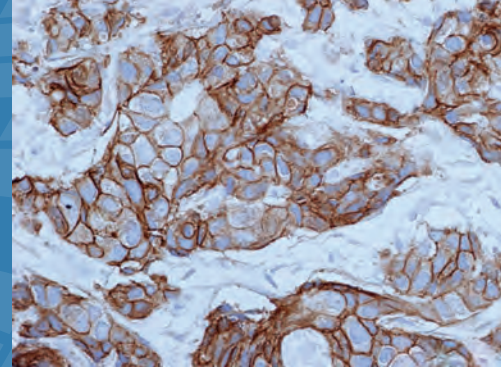


## Three Ways to Detect HER2 in FFPE Tissue

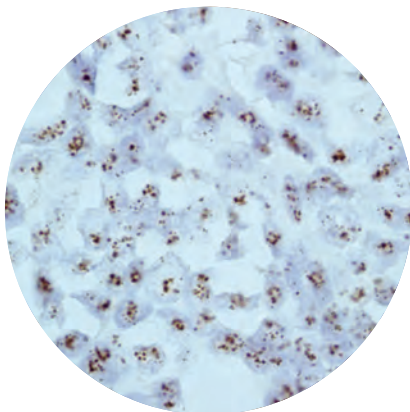


### Overview

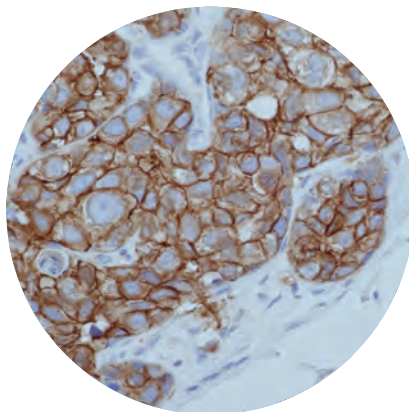
Genemed offers three ways to detect c-erbB2/HER2 in formalin fixed, paraffin embedded (FFPE) tissue sections:

Method	Product	Cat. No.	Price
Immunohistochemistry	Rabbit Monoclonal anti-HER2 Antibody Clone GR011	61-0154	\$450
Chromogenic In-Situ Hybridization	HER2 Digoxigenin CISH Probe*	70-0011	\$540
Fluorescent In-Situ Hybridization	HER2 Red and Chromosome 17 Centromere Green FISH Probe Cocktail*	70-0012	\$480

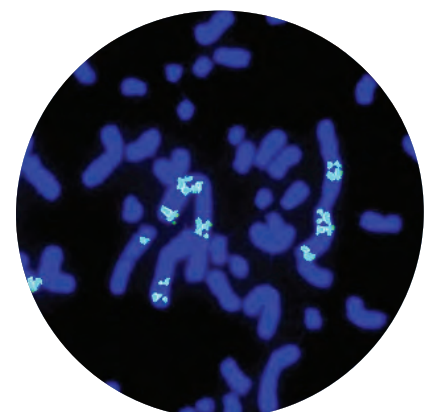
\*For Research Use Only in the U.S.A.



CISH Probe



Rabbit Monoclonal  
Antibody



FISH Probe

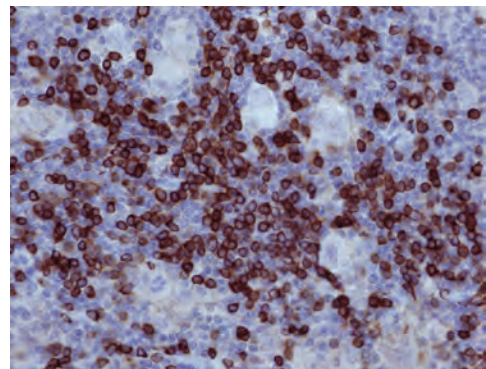
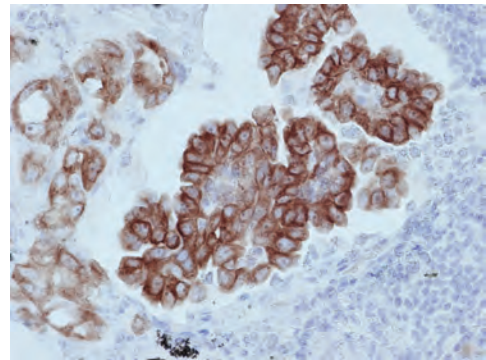
## Rabbit Monoclonal Antibodies for IHC Application in FFPE Tissue

Genemed develops rabbit monoclonal antibodies (RbMab) specifically designed for immunohistochemistry (IHC) application in formalin fixed, paraffin embedded tissue section (FFPE). Supernatants of cultured B cells from immunized rabbits are tested in human FFPE tissue arrays by IHC. cDNAs of the heavy and light chains from the B cell clones identified after screening tests are cloned. The specific RbMab is produced by expression of the cDNA in mammalian cells. These antibodies are designated as GR clones, which have superior sensitivity and specificity when compared to many mouse monoclonal antibody counterparts.

### Genemed Rabbit Monoclonal Antibody Benefits

- Superior sensitivity and specificity
- Higher affinity
- More accurate results
- Validated for IVD use

Antibody	Clone	Cat. No.	Price
CD19	GR014	61-0164	\$578
CD23	GR013	61-0162	\$630
CDX2	GR012	61-0161	\$683
Cyclin D1	GR005	61-0090	\$578
HER2	GR011	61-0154	\$450
Synaptophysin	GR007	61-0122	\$368
Villin	GR016	61-0170	\$550



### Coming Soon

- ER
- PR
- EGFR
- CD4
- CD5
- CD21
- CD23
- CD45
- CD79a
- Cytokeratin 8
- LGR5

